

GUNNEDAH HOSPITAL REDEVELOPMENT

MARQUIS STREET GUNNEDAH, NSW 2380
CIVIL ENGINEERING PACKAGE



CIVIL DRAWING SCHEDULE

DWG No.	DRAWING TITLE
GHR-CI-MW-0101	COVER SHEET, DRAWING SCHEDULE AND LOCALITY PLAN
GHR-CI-MW-0111	SPECIFICATION NOTES - SHEET 01
GHR-CI-MW-0112	SPECIFICATION NOTES - SHEET 02
GHR-CI-MW-0113	SPECIFICATION NOTES - SHEET 03
GHR-CI-MW-0121	GENERAL ARRANGEMENT PLAN
GHR-CI-MW-0201	SEDIMENT AND SOIL EROSION CONTROL PLAN
GHR-CI-MW-0211	SEDIMENT AND SOIL EROSION CONTROL DETAILS
GHR-CI-MW-0301	CUT AND FILL PLAN
GHR-CI-MW-0401	SITEWORKS AND STORMWATER MANAGEMENT PLAN - SHEET 01
GHR-CI-MW-0402	SITEWORKS AND STORMWATER MANAGEMENT PLAN - SHEET 02
GHR-CI-MW-0541	STORMWATER CATCHMENT PLAN
GHR-CI-MW-0601	RETAINING WALL PLAN
GHR-CI-MW-0621	RETAINING WALL ELEVATIONS - SHEET 01
GHR-CI-MW-0622	RETAINING WALL ELEVATIONS - SHEET 02
GHR-CI-MW-0623	RETAINING WALL ELEVATIONS - SHEET 03
GHR-CI-MW-0624	RETAINING WALL ELEVATIONS - SHEET 04
GHR-CI-MW-0701	PAVEMENT PLAN - SHEET 01
GHR-CI-MW-0702	PAVEMENT PLAN - SHEET 02
GHR-CI-MW-1001	DETAILS - SHEET 01
GHR-CI-MW-1002	DETAILS - SHEET 02
GHR-CI-MW-1003	DETAILS - SHEET 03
GHR-CI-MW-1004	DETAILS - SHEET 04
GHR-CI-MW-1005	DETAILS - SHEET 05
GHR-CI-MW-1006	DETAILS - SHEET 06
GHR-CI-MW-1007	DETAILS - SHEET 07

ALL SETOUT TO ARCHITECT'S DRAWINGS. DIMENSIONS TO BE VERIFIED WITH ARCHITECT AND BUILDER BEFORE COMMENCING SHOP DRAWINGS OR SITE WORK. NORTHROP ACCEPTS NO RESPONSIBILITY FOR THE USABILITY, COMPLETENESS OR SCALE OF DRAWINGS TRANSFERRED ELECTRONICALLY. THE COPYRIGHT OF THIS DRAWING REMAINS WITH NORTHROP CONSULTING ENGINEERS PTY LTD

REV	DESCRIPTION	ISS'D	VER'D	APP'D	DATE
B	RE-ISSUED FOR SCHEMATIC DESIGN	MM		AC	14.10.22
C	ISSUED FOR 70% DETAILED DESIGN	MM		TB	25.08.23
D	ISSUED FOR 100% DETAILED DESIGN	MM		AC	20.10.23
E	ISSUED FOR 100% DETAILED DESIGN	MM		AC	27.10.23
F	40% CONTRACT DOCUMENTATION	MM		AC	02.02.24
G	40% CONTRACT DOCUMENTATION	AS		AC	05.03.24

ARCHITECT

CLIENT

PROJECT

GUNNEDAH HOSPITAL REDEVELOPMENT

MARQUIS STREET, GUNNEDAH, NSW 2380

Sydney
Level 11, 345 George Street, Sydney, N.S.W. 2000
Ph (02) 9241 4188 Email: sydney@northrop.com.au
ABN 81 094 433 100

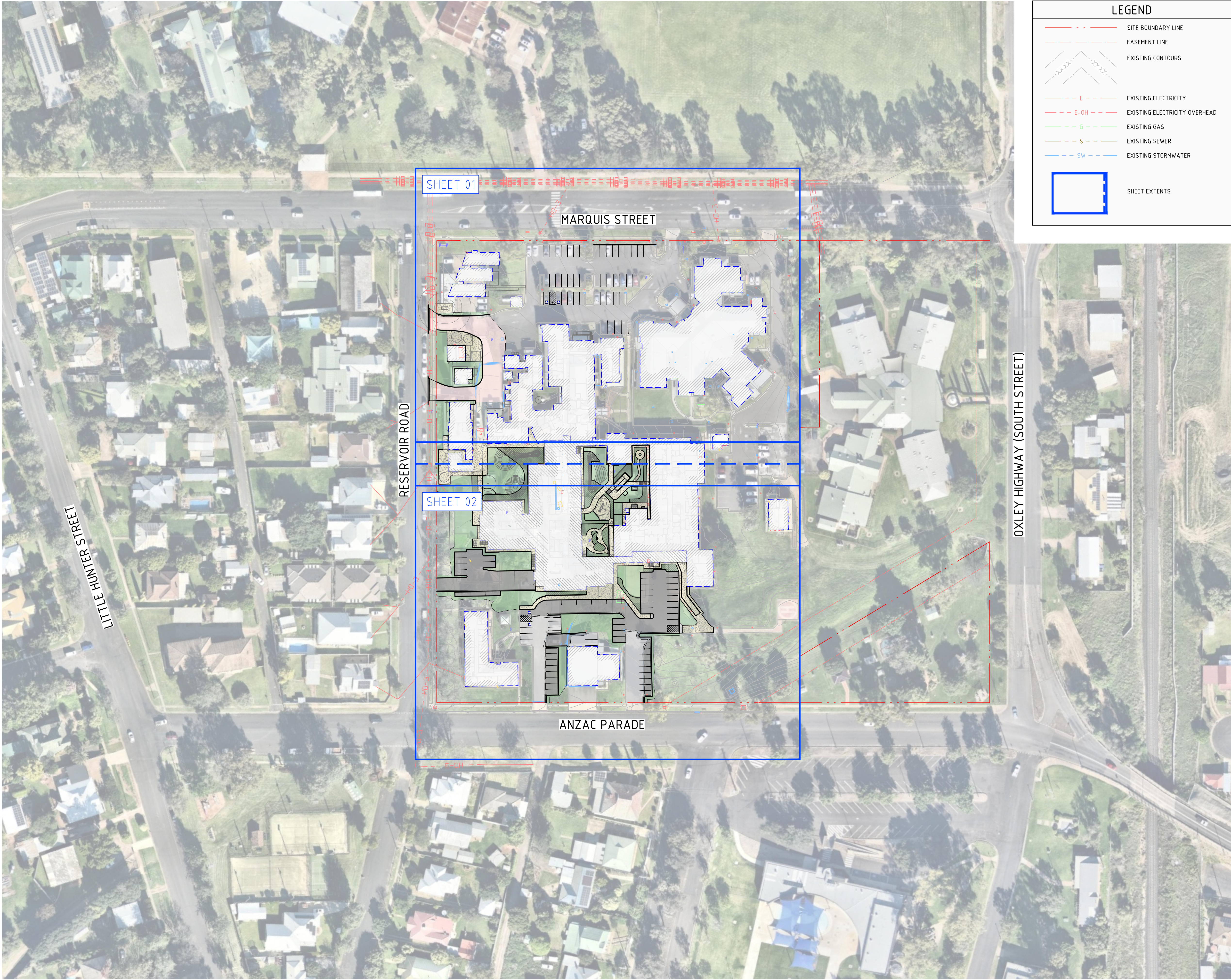
DRAWING TITLE

COVER SHEET, DRAWING SCHEDULE AND LOCALITY PLAN

NOT FOR CONSTRUCTION

JOB NUMBER	DRAWING NUMBER	REVISION
220254	GHR-CI-MW-0101	G
DRAWING SHEET SIZE = A1		

DRAWN: M. MAI
DESIGNED: A. CARVALHAES
JOB MANAGER: A. CARVALHAES
VERIFIER: -



LEGEND

SITE BOUNDARY LINE

EASEMENT LINE

EXISTING CONTOURS

EXISTING ELECTRICITY

EXISTING ELECTRICITY OVERHEAD

EXISTING GAS

EXISTING SEWER

EXISTING STORMWATER

SHEET EXTENTS

ALL SETOUT TO ARCHITECT'S DRAWINGS. DIMENSIONS TO BE VERIFIED WITH ARCHITECT AND BUILDER BEFORE COMMENCING SHOP DRAWINGS OR SITE WORK. NORTHROP ACCEPTS NO RESPONSIBILITY FOR THE USABILITY, COMPLETENESS OR SCALE OF DRAWINGS TRANSFERRED ELECTRONICALLY. THE COPYRIGHT OF THIS DRAWING REMAINS WITH NORTHROP CONSULTING ENGINEERS PTY LTD

GENERAL NOTES:

1. SURVEY SUPPLIED BY: MONTEATH AND POWYS

1.1. REF. NUMBER: 22/0056

1.2. DRAWING TITLE: DETAIL SURVEY OVER SITE OF GUNNEDAH HOSPITAL & SURROUNDS MARQUIS STREET, GUNNEDAH

1.3. REVISION NUMBER: 3

1.3. GEOCENTRIC DATUM OF AUSTRALIA: GDA 2020

2. ALL UTILITY SERVICES INDICATED ON THE DRAWINGS ORIGINATE FROM SUPPLIED DATA OR DIAL BEFORE YOU DIG SEARCHES, THEREFORE THEIR ACCURACY AND COMPLETENESS IS NOT GUARANTEED. IT IS THE RESPONSIBILITY OF THE CONTRACTOR TO DETERMINE AND CONFIRM THE LOCATION AND LEVEL OF ALL EXISTING SERVICES PRIOR TO THE COMMENCEMENT OF ANY WORK. ANY DISCREPANCIES SHALL BE REPORTED TO THE SUPERINTENDENT. CLEARANCES SHALL BE OBTAINED FROM THE RELEVANT SERVICE AUTHORITY. NOTE SERVICE AUTHORITY REQUIREMENTS FOR LOCATING OF SERVICES PRIOR TO COMMENCEMENT OF WORKS.

3. NORTHROP TAKE NO RESPONSIBILITY FOR THE ACCURACY AND/OR USE OF THIS SURVEY AND ITS CONTENTS

REV	DESCRIPTION	ISS'D	VER'D	APP'D	DATE
D	ISSUED FOR 100% DETAILED DESIGN	MM		AC	20.10.23
E	ISSUED FOR 100% DETAILED DESIGN	MM		AC	27.10.23
F	40% CONTRACT DOCUMENTATION	MM		AC	02.02.24
G	40% CONTRACT DOCUMENTATION	AS		AC	05.03.24
H	70% CONTRACT DOCUMENTATION	MM		AC	22.03.24
I	70% CONTRACT DOCUMENTATION	MM		AC	12.04.24

ARCHITECT

dwp

CLIENT

NSW GOVERNMENT

Health Infrastructure

PROJECT

GUNNEDAH HOSPITAL REDEVELOPMENT

MARQUIS STREET, GUNNEDAH, NSW 2380

NORTHROP

Sydney

Level 11, 345 George Street, Sydney, N.S.W. 2000

Ph (02) 9241 4188 Email: sydney@northrop.com.au

ABN 81 094 433 100

SCALE 1:800@A1

0

10

20

30

40m

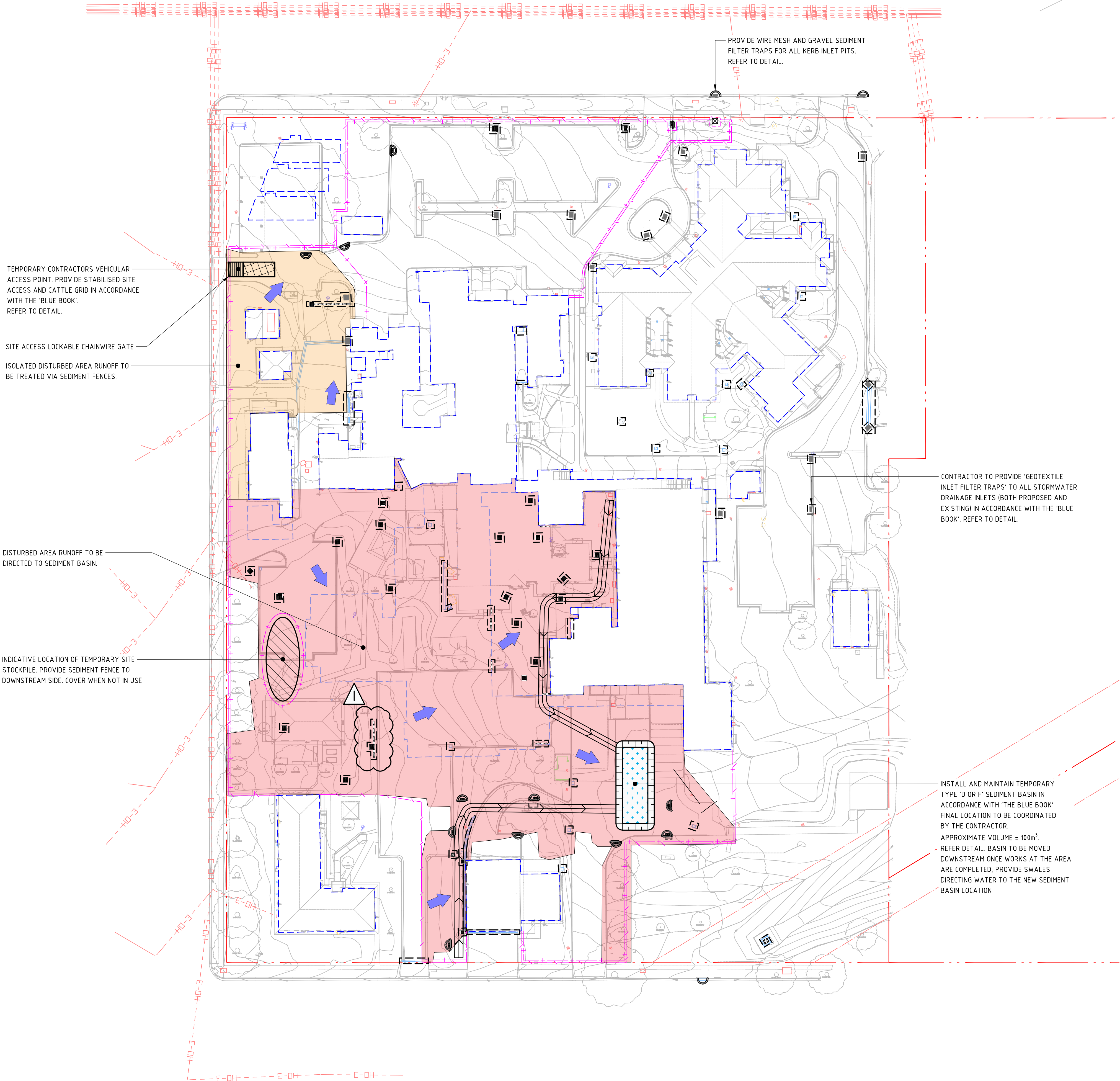
DRAWING TITLE

GENERAL ARRANGEMENT PLAN

NOT FOR CONSTRUCTION

JOB NUMBER	DRAWING NUMBER	REVISION
220254	GHR-CI-MW-0121	I
DRAWING SHEET SIZE = A1		

DRAWN: M. MAI
DESIGNED: A. CARVALHAES
JOB MANAGER: A. CARVALHAES
VERIFIER: -



LEGEND

- PROPOSED BOUNDARY LINE
- EASEMENT LINE
- BUILDING OUTLINE
- EXISTING ELECTRICITY
- EXISTING ELECTRICITY (OVERHEAD)
- EXISTING GAS
- EXISTING STORMWATER
- EXISTING SEWER
- EXISTING CONTOURS
- NEW DRAINAGE STRUCTURE
- SEDIMENT FENCE
- SECURITY FENCE
- WIRE MESH AND GRAVEL SEDIMENT FILTER
- GEOTEXTILE INLET FILTER TRAP
- TEMPORARY DRAINAGE SWALE
- STABILISED SITE ACCESS
- STOCKPILE
- SEDIMENT BASIN

ALL SETOUT TO ARCHITECT'S DRAWINGS. DIMENSIONS TO BE VERIFIED WITH ARCHITECT AND BUILDER BEFORE COMMENCING SHOP DRAWINGS OR SITE WORK. NORTHROP ACCEPTS NO RESPONSIBILITY FOR THE USABILITY, COMPLETENESS OR SCALE OF DRAWINGS. TRANSFERRED ELECTRONICALLY. THE COPYRIGHT OF THIS DRAWING REMAINS WITH NORTHROP CONSULTING ENGINEERS PTY LTD.

GENERAL NOTES:

- REFER SPECIFICATIONS NOTES FOR SEDIMENT AND SOIL EROSION CONTROL GENERAL REQUIREMENTS.
- ALL WORKS TO BE CARRIED OUT IN ACCORDANCE WITH COUNCIL / RELEVANT AUTHORITY SPECIFICATIONS AND DETAILS.
- ALL SEDIMENT AND SOIL EROSION CONTROL MEASURES TO BE INSTALLED IN ACCORDANCE WITH THE 'BLUE BOOK'. CONTRACTOR TO ENSURE THESE MEASURES ARE IN PLACE AND MAINTAINED AT ALL TIMES DURING CONSTRUCTION WORKS.
- CONTRACTOR TO PROVIDE 'WIRE MESH AND GRAVEL SEDIMENT FILTER' TO ALL PAVED / ROAD AREAS (BOTH PROPOSED AND EXISTING) IN ACCORDANCE WITH THE 'BLUE BOOK'.
- CONTRACTOR TO PROVIDE 'GEOTEXTILE INLET FILTER TRAPS' TO ALL STORMWATER DRAINAGE INLETS (BOTH PROPOSED AND EXISTING) IN ACCORDANCE WITH THE 'BLUE BOOK'.
- ALL PITS OPEN TO ATMOSPHERE TO BE PROTECTED IN ACCORDANCE WITH THE 'BLUE BOOK'.

SEDIMENT BASIN CALCULATIONS

PARAMETER	ADOPTED VALUE
TOTAL DISTURBED AREA (ha)	0.790
SOIL TEXTURE GROUP	D OR F
DESIGN RAINFALL DEPTH (DAYS)	5
DESIGN RAINFALL DEPTH (PERCENTILE)	80%
x-DAY, y-PERCENTILE RAINFALL EVENT	24.1
Cv	0.35
SETTLING ZONE VOLUME (m ³)	66.637
SEDIMENT STORAGE VOLUME (m ³)	33.318
TOTAL BASIN VOLUME (m ³)	99.955

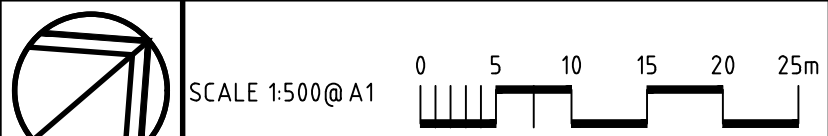
REV	DESCRIPTION	ISS'D	VER'D	APP'D	DATE
E	ISSUED FOR 100% DETAILED DESIGN	MM		AC	20.10.23
F	ISSUED FOR 100% DETAILED DESIGN	MM		AC	27.10.23
G	40% CONTRACT DOCUMENTATION	MM		AC	02.02.24
H	40% CONTRACT DOCUMENTATION	AS		AC	05.03.24
I	70% CONTRACT DOCUMENTATION	MM		AC	22.03.24
J	70% CONTRACT DOCUMENTATION	MM		AC	12.04.24



PROJECT

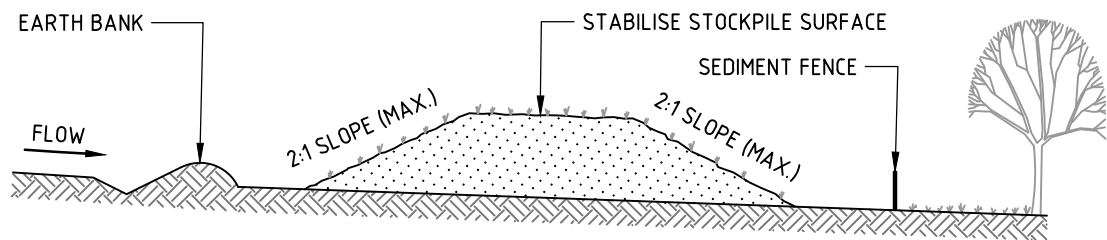
GUNNEDAH HOSPITAL REDEVELOPMENT

MARQUIS STREET, GUNNEDAH, NSW 2380



DRAWING TITLE		
SEDIMENT AND SOIL EROSION CONTROL PLAN		
FOR CONSTRUCTION		
JOB NUMBER	DRAWING NUMBER	REVISION
220254	GHR-CI-MW-0201	J
DRAWING SHEET SIZE = A1		

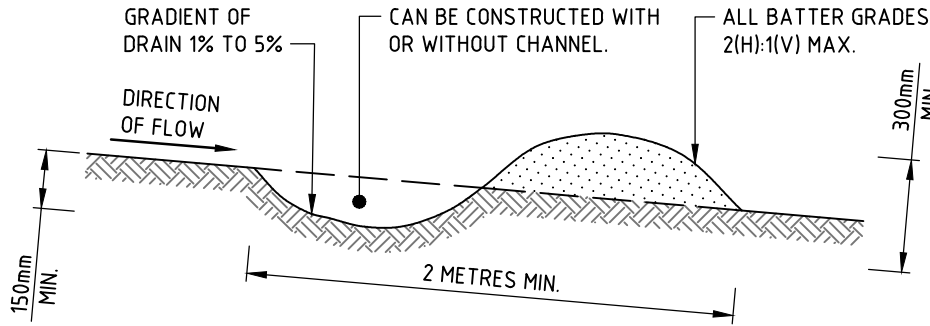
DESIGNED: A. CARVALHAES
JOB MANAGER: A. CARVALHAES
VERIFIER: -
DRAWN: M. MAI



CONSTRUCTION NOTES

1. PLACE STOCKPILES MORE THAN 2m (PREFERABLY 5m) FROM EXISTING VEGETATION, CONCENTRATED WATER FLOW, ROADS AND HAZARD AREAS.
2. CONSTRUCT ON THE CONTOUR AS LOW, FLAT, ELONGATED MOUNDS.
3. WHERE THERE IS SUFFICIENT AREA, TOPSOIL STOCKPILES SHALL BE LESS THAN 2m IN HEIGHT.
4. WHERE THEY ARE TO BE IN PLACE FOR MORE THAN 10 DAYS, STABILISE FOLLOWING THE APPROVED ESCP OR SWMP TO REDUCE THE C-FACTOR TO LESS THAN 0.10.
5. CONSTRUCT EARTH BANKS (STANDARD DRAWING 5-5) ON THE UPSLOPE SIDE TO DIVERT WATER AROUND STOCKPILES AND SEDIMENT FENCES (STANDARD DRAWING 6-8) 1 TO 2m DOWNSLOPE.

STOCKPILE

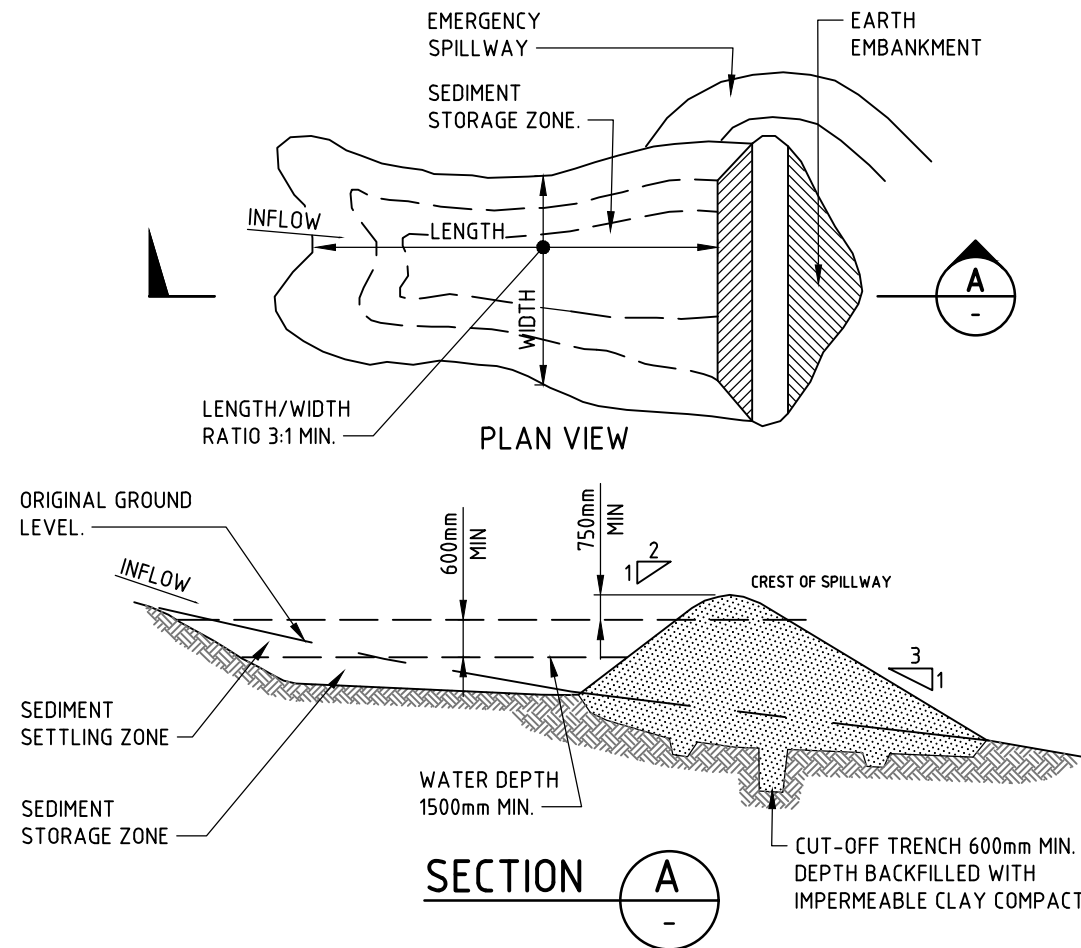


CONSTRUCTION NOTES

1. BUILD WITH GRADIENTS BETWEEN 1 AND 5 PERCENT.
2. AVOID REMOVING TREES AND SHRUBS IF POSSIBLE - WORK AROUND THEM.
3. ENSURE THE STRUCTURES ARE FREE OF PROJECTIONS OR OTHER IRREGULARITIES THAT COULD IMPEDE WATER FLOW.
4. BUILD THE DRAINS WITH CIRCULAR, PARABOLIC OR TRAPEZOIDAL CROSS SECTIONS, NOT V SHAPED.
5. ENSURE THE BANKS ARE PROPERLY COMPACTED TO PREVENT FAILURE.
6. COMPLETE PERMANENT OR TEMPORARY STABILISATION WITHIN 10 DAYS OF CONSTRUCTION.

NOTE: ONLY TO BE USED AS TEMPORARY BANK WHERE MAXIMUM UPSLOPE LENGTH IS 80 METRES.

DRAINAGE SWALE

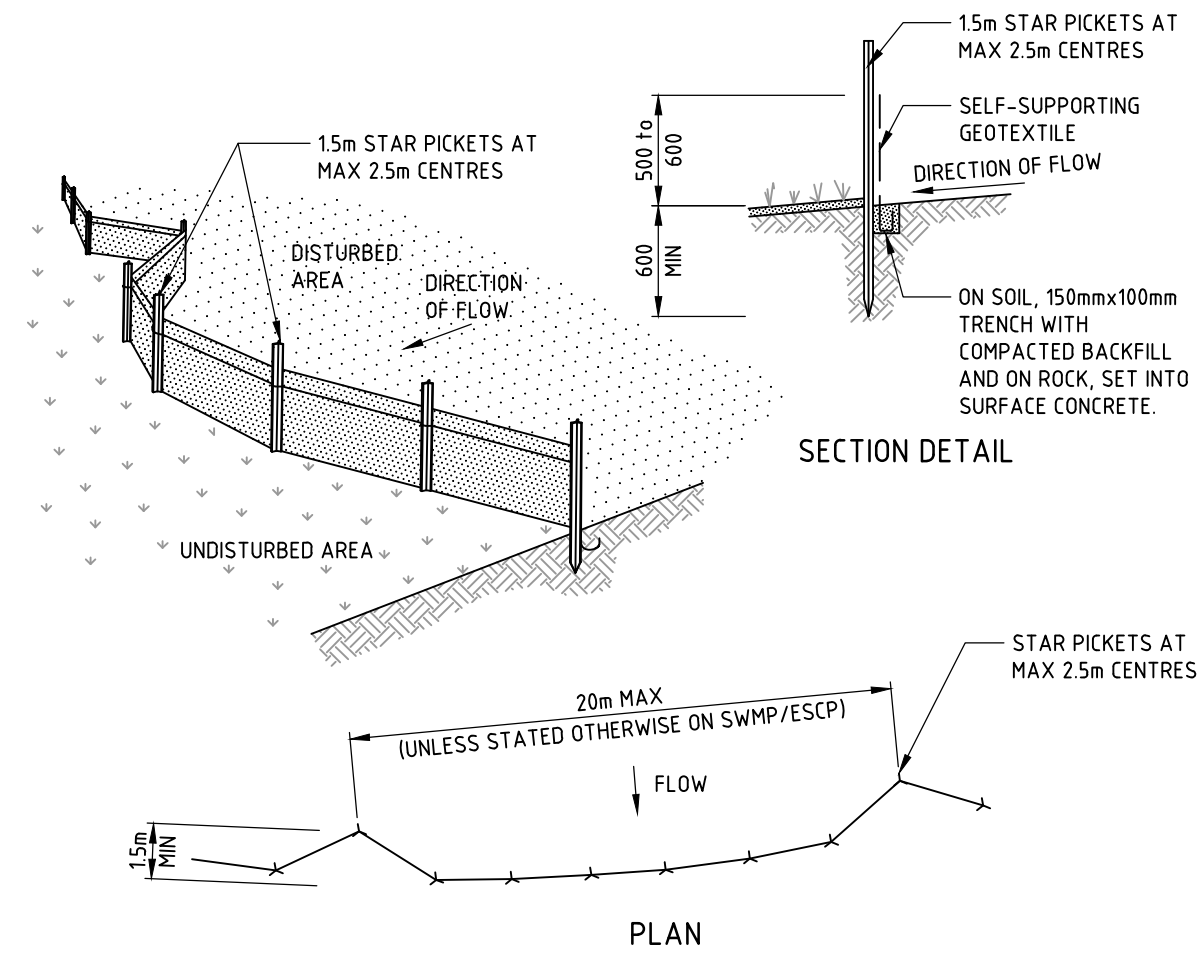


CONSTRUCTION NOTES

1. REMOVE ALL VEGETATION AND TOPSOIL FROM UNDER THE DAM WALL AND FROM WITHIN THE STORAGE AREA.
2. CONSTRUCT A CUT-OFF TRENCH 500mm DEEP AND 1200mm WIDE ALONG THE CENTRELINE OF THE EMBANKMENT EXTENDING TO A POINT ON THE GULLY WALL LEVEL WITH THE RISER CREST.
3. MAINTAIN THE TRENCH FREE OF WATER AND RECOMPACT THE MATERIALS WITH EQUIPMENT AS SPECIFIED IN THE SWMP TO 95 PER CENT STANDARD PROCTOR DENSITY.
4. SELECT FILL FOLLOWING THE SWMP THAT IS FREE OF ROOTS, WOOD, ROCK, LARGE STONE OR FOREIGN MATERIAL.
5. PREPARE THE SITE UNDER THE EMBANKMENT BY RIPPING TO AT LEAST 100mm TO HELP BOND COMPACTED FILL TO THE EXISTING SUBSTRATE.
6. SPREAD THE FILL IN 100mm TO 150mm LAYERS AND COMPACT IT AT OPTIMUM MOISTURE CONTENT FOLLOWING THE SWMP.
7. CONSTRUCT THE EMERGENCY SPILLWAY.
8. REHABILITATE THE STRUCTURE FOLLOWING THE SWMP.

(APPLIES TO 'TYPE D' AND 'TYPE F' SOILS ONLY)

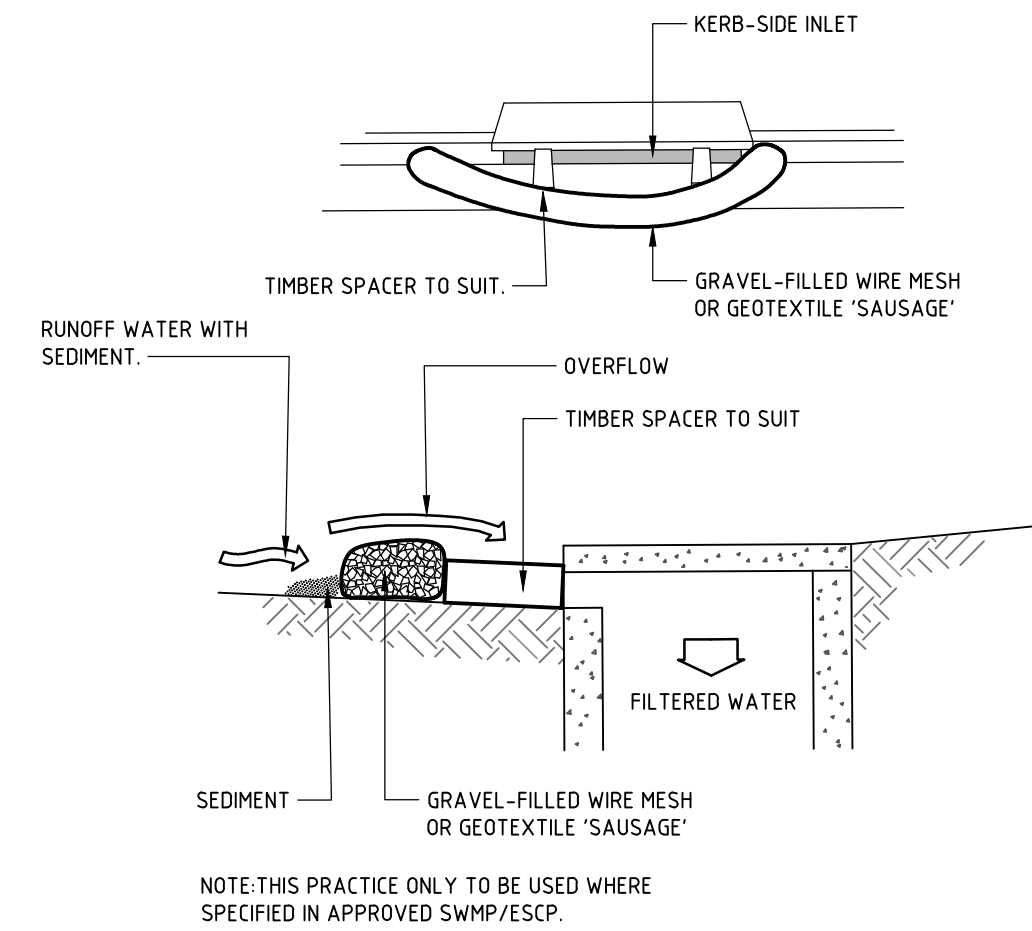
SEDIMENT BASIN



CONSTRUCTION NOTES

1. CONSTRUCT SEDIMENT FENCES AS CLOSE AS POSSIBLE TO BEING PARALLEL TO THE CONTOURS OF THE SITE, BUT WITH SMALL RETURNS AS SHOWN IN THE DRAWING TO LIMIT THE CATCHMENT AREA OF ANY ONE SECTION. THE CATCHMENT AREA SHOULD BE SMALL ENOUGH TO LIMIT WATER FLOW IF CONCENTRATED AT ONE POINT TO 50 LITRES PER SECOND IN THE DESIGN STORM EVENT, USUALLY THE 10-YEAR EVENT.
2. CUT A 150mm DEEP TRENCH ALONG THE UPSLOPE LINE OF THE FENCE FOR THE BOTTOM OF THE FABRIC TO BE ENTRENCHED.
3. DRIVE 15 METRE LONG STAR PICKETS INTO GROUND AT 2.5 METRE INTERVALS (MAX) AT THE DOWNSLOPE EDGE OF THE TRENCH. ENSURE ANY STAR PICKETS ARE FITTED WITH SAFETY CAPS.
4. FIX SELF-SUPPORTING GEOTEXTILE TO THE UPSLOPE SIDE OF THE POSTS ENSURING IT GOES TO THE BASE OF THE TRENCH. FIX THE GEOTEXTILE WITH WIRE TIES OR AS RECOMMENDED BY THE MANUFACTURER. ONLY USE GEOTEXTILE SPECIFICALLY PRODUCED FOR SEDIMENT FENCING. THE USE OF SHADE CLOTH FOR THIS PURPOSE IS NOT SATISFACTORY.
5. JOIN SECTIONS OF FABRIC AT A SUPPORT POST WITH A 150mm OVERLAP.
6. BACKFILL THE TRENCH OVER THE BASE OF THE FABRIC AND COMPACT IT THOROUGHLY OVER THE GEOTEXTILE.

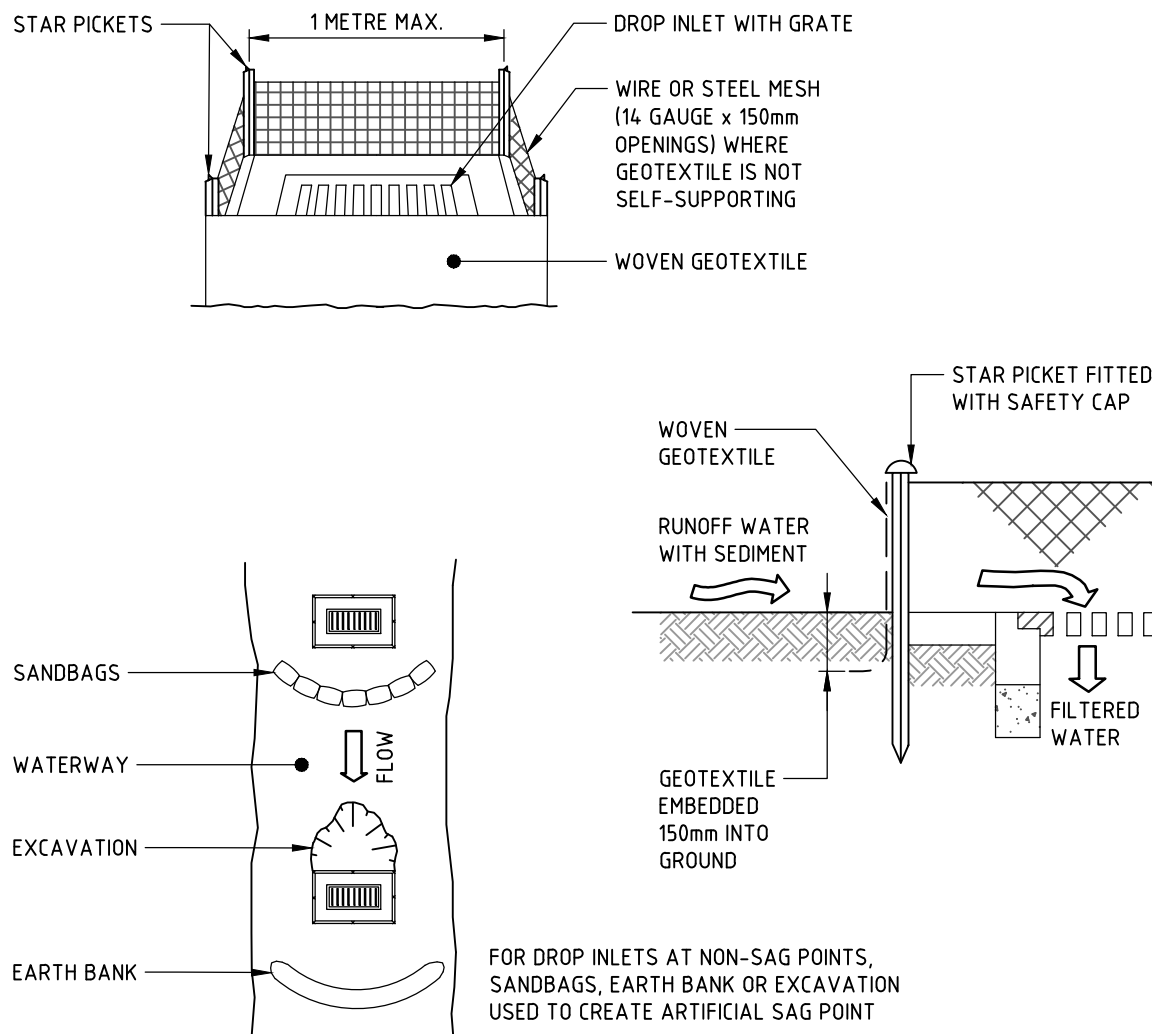
SEDIMENT FENCE



CONSTRUCTION NOTES

1. INSTALL FILTERS TO KERB INLETS ONLY AT SAG POINTS.
2. FABRICATE A SLEEVE MADE FROM GEOTEXTILE OR WIRE MESH LONGER THAN THE LENGTH OF THE INLET PIT AND FILL IT WITH 25mm TO 50mm GRAVEL.
3. FORM AN ELLIPTICAL CROSS-SECTION ABOUT 150mm HIGH x 400mm WIDE.
4. PLACE THE FILTER AT THE OPENING LEAVING AT LEAST A 100mm SPACE BETWEEN IT AND THE KERB INLET. MAINTAIN THE OPENING WITH SPACER BLOCKS.
5. FORM A SEAL WITH THE KERB TO PREVENT SEDIMENT BYPASSING THE FILTER.
6. SANDBAGS FILLED WITH GRAVEL CAN SUBSTITUTE FOR THE MESH OR GEOTEXTILE PROVIDING THEY ARE PLACED SO THAT THEY FIRMLY ABUT EACH OTHER AND SEDIMENT-LADEN WATERS CANNOT PASS BETWEEN

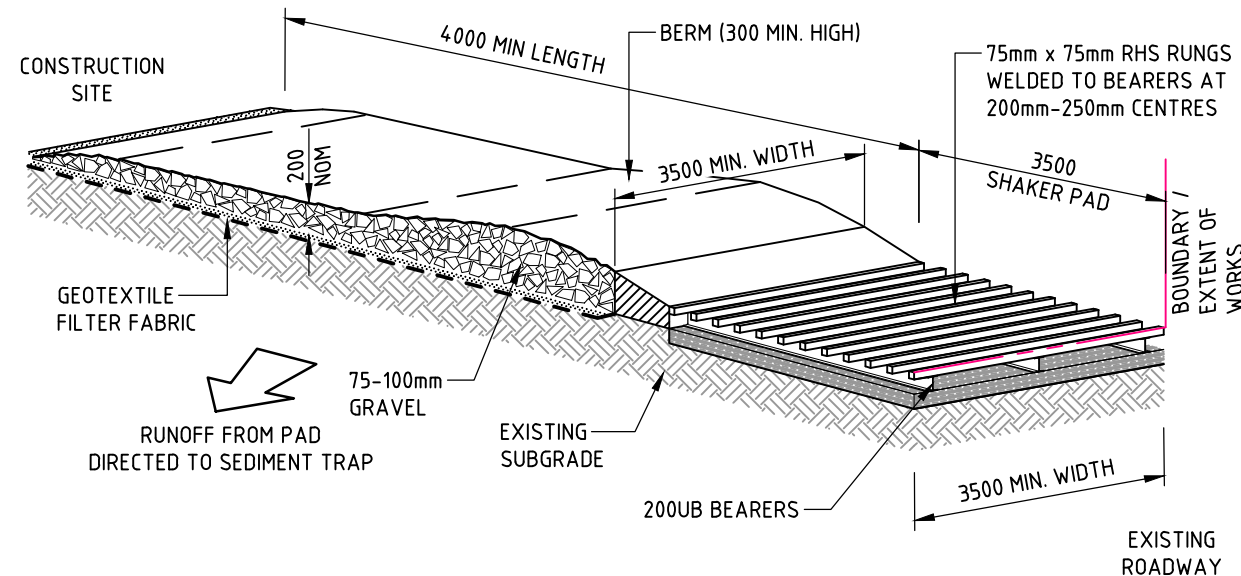
WIRE MESH AND GRAVEL SEDIMENT FILTER



CONSTRUCTION NOTES

1. FABRICATE A SEDIMENT BARRIER MADE FROM GEOTEXTILE OR STRAW BALES.
2. FOLLOW STANDARD DRAWING 6-7 AND STANDARD DRAWING 6-8 FOR INSTALLATION PROCEDURES FOR THE STRAW BALES OR GEOFABRIC. REDUCE THE PICKET SPACING TO 1 METRE CENTRES.
3. IN WATERWAYS, ARTIFICIAL SAG POINTS CAN BE CREATED WITH SANDBAGS OR EARTH BANKS AS SHOWN IN THE DRAWING.
4. DO NOT COVER THE INLET WITH GEOTEXTILE UNLESS THE DESIGN IS ADEQUATE TO ALLOW FOR ALL WATERS TO BYPASS IT.

GEOTEXTILE INLET FILTER TRAPS



CONSTRUCTION NOTES

1. THE TEMPORARY ACCESS SHALL BE MAINTAINED IN A CONDITION THAT PREVENTS TRACKING OR FLOWING OF SEDIMENT ONTO PUBLIC RIGHTS OF WAY.
 - THIS MAY REQUIRE PERIODIC TOP DRESSING WITH ADDITIONAL GRAVEL AS CONDITIONS DEMAND AND REPAIR AND/OR CLEANOUT OF ANY MEASURES USED TO TRAP SEDIMENT.
2. ALL SEDIMENT SPILLED, DROPPED, WASHED OR TRACKED ONTO PUBLIC RIGHTS OF WAY MUST BE REMOVED IMMEDIATELY.
3. INSTALL BARRIER ON EITHER SIDE OF SHAKER PAD. TO ENSURE VEHICLES ARE GUIDED ON TO THE PAD.
4. INVERT OF SHAKER PAD TO BE DRAINED VIA AGRICULTURAL PIPE WRAPPED IN GEOTEXTILE FABRIC.

STABILISED SITE ACCESS

ALL SETOUT TO ARCHITECT'S DRAWINGS. DIMENSIONS TO BE VERIFIED WITH ARCHITECT AND BUILDER BEFORE COMMENCING SHOP DRAWINGS OR SITE WORK. NORTHROP ACCEPTS NO RESPONSIBILITY FOR THE USABILITY, COMPLETENESS OR SCALE OF DRAWINGS TRANSFERRED ELECTRONICALLY. THE COPYRIGHT OF THIS DRAWING REMAINS WITH NORTHROP CONSULTING ENGINEERS PTY LTD

REV	DESCRIPTION	ISS'D	VER'D	APP'D	DATE
D	ISSUED FOR 100% DETAILED DESIGN	MM		AC	20.10.23
G	ISSUED FOR 100% DETAILED DESIGN	MM		AC	27.10.23
H	40% CONTRACT DOCUMENTATION	MM		AC	02.02.24
I	40% CONTRACT DOCUMENTATION	AS		AC	05.03.24
J	70% CONTRACT DOCUMENTATION	MM		AC	22.03.24
K	70% CONTRACT DOCUMENTATION	MM		AC	12.04.24



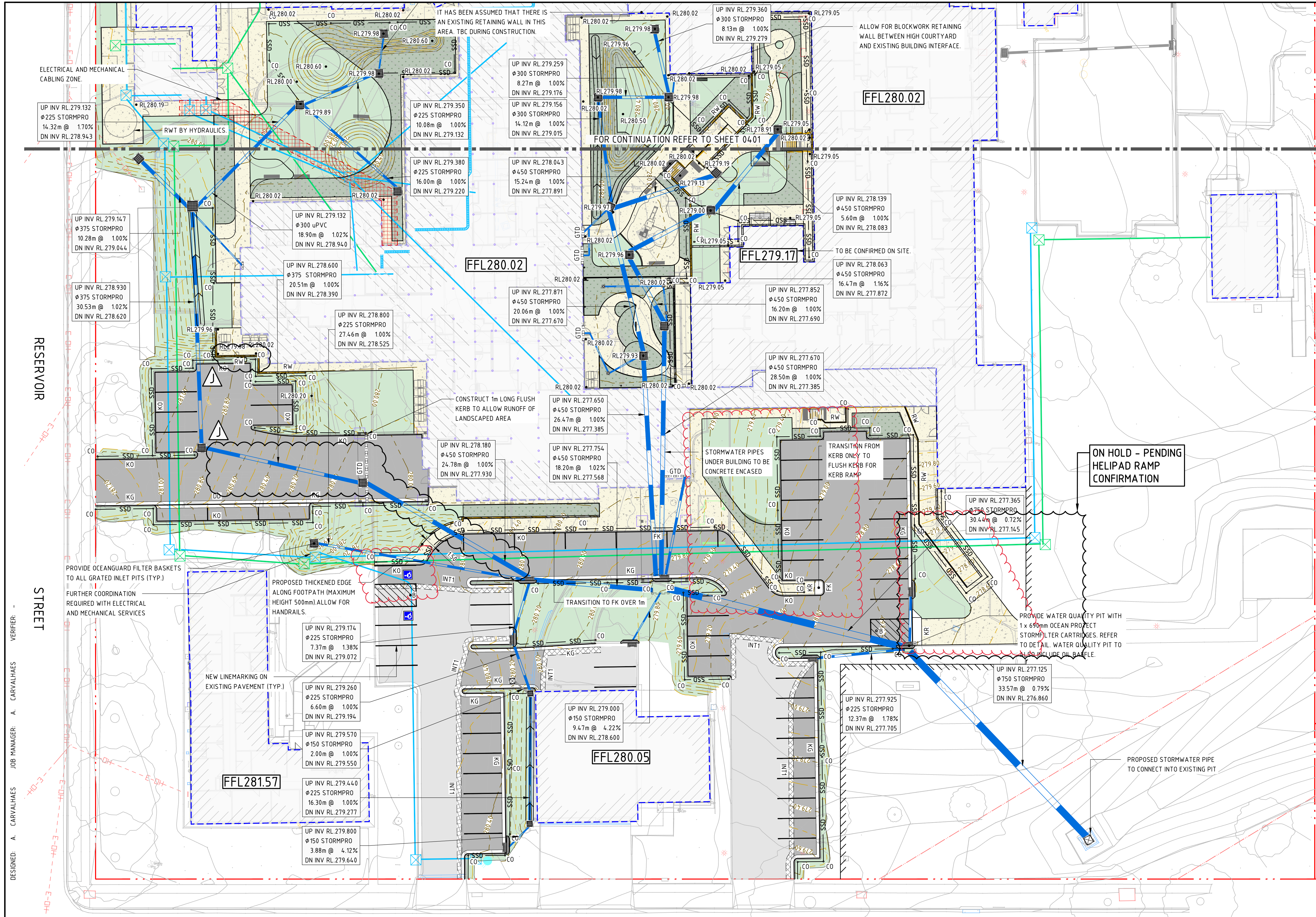
PROJECT
GUNNEDAH HOSPITAL REDEVELOPMENT
MARQUIS STREET, GUNNEDAH, NSW 2380



NOT TO SCALE

DRAWING TITLE
SEDIMENT AND SOIL EROSION CONTROL DETAILS
FOR CONSTRUCTION

JOB NUMBER	DRAWING NUMBER	REVISION
220254	GHR-CI-MW-0211	K
DRAWING SHEET SIZE = A1		



ALL SETOUT TO ARCHITECT'S DRAWINGS. DIMENSIONS TO BE VERIFIED WITH ARCHITECT AND BUILDER BEFORE COMMENCING SHOP DRAWINGS OR SITE WORK. NORTHROP ACCEPTS NO RESPONSIBILITY FOR THE USABILITY, COMPLETENESS OR SCALE OF DRAWINGS TRANSFERRED ELECTRONICALLY. THE COPYRIGHT OF THIS DRAWING REMAINS WITH NORTHROP CONSULTING ENGINEERS PTY LTD

- GENERAL NOTES:**
1. REFER SPECIFICATIONS NOTES FOR STORMWATER AND SITEWORKS GENERAL REQUIREMENTS AND LEGEND.
 2. ALL WORKS TO BE CARRIED OUT IN ACCORDANCE WITH COUNCIL / RELEVANT AUTHORITY SPECIFICATIONS AND DETAILS.
 3. CAD FILES TO BE SUPPLIED IN AUTOCAD FORMAT FOR SETOUT PURPOSES (UPON REQUEST).
 4. SUBSOIL DRAINAGE TO RETAINING WALLS, KERBS AND SWALE DRAINS NOT SHOWN FOR CLARITY - REFER RELEVANT DETAILS.
 5. REFER HYDRAULIC ENGINEERS / ARCHITECTS DRAWINGS FOR DOWNPIPE LOCATIONS AND SIZING.
 6. PROVIDE DRAINAGE CONNECTIONS TO KERB IN ACCORDANCE WITH COUNCIL STANDARD DETAILS AND SPECIFICATION.
 7. CONTRACTOR TO ALLOW TO ADJUST AND LIAISE WITH RELEVANT SERVICE AUTHORITIES IN RELATION TO EXISTING SERVICE ADJUSTMENT AND MODIFICATIONS.
 8. WHEEL STOPS TO BE INSTALLED TO ALL CAR SPACES AS SHOWN AND INSTALLED IN ACCORDANCE WITH AUSTRALIAN STANDARDS AND MANUFACTURERS SPECIFICATIONS. IF WHEEL STOPS ARE NOT SHOWN, ALLOW FOR WHEEL STOPS WHERE CAR SPACES ARE FRONTING A WALL.
 9. ALL NEW GRATED INLET STORMWATER PITS TO HAVE OCEAN PROTECT OCEANGUARD PIT INSERTS.

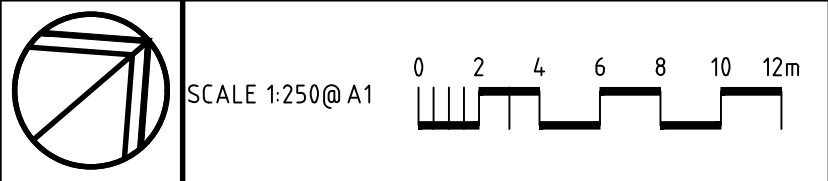
REV	DESCRIPTION	ISS'D	VER'D	APP'D	DATE
F	ISSUED FOR 100% DETAILED DESIGN	MM		AC	27.10.23
G	40% CONTRACT DOCUMENTATION	MM		AC	02.02.24
H	40% CONTRACT DOCUMENTATION	MM		AC	15.02.24
I	40% CONTRACT DOCUMENTATION	AS		AC	05.03.24
J	70% CONTRACT DOCUMENTATION	MM		AC	22.03.24
K	70% CONTRACT DOCUMENTATION	MM		AC	12.04.24



PROJECT

GUNNEDAH HOSPITAL REDEVELOPMENT

MARQUIS STREET, GUNNEDAH, NSW 2380



DRAWING TITLE		
SITEWORKS AND STORMWATER MANAGEMENT PLAN - SHEET 02		
NOT FOR CONSTRUCTION		
JOB NUMBER	DRAWING NUMBER	REVISION
220254	GHR-CI-MW-0402	K
DRAWING SHEET SIZE = A1		

DESIGNED: A. CARVALHAES JOB MANAGER: A. CARVALHAES VERIFIER: -
DRAWN: M. MAI